

Networking in Medicine and Science

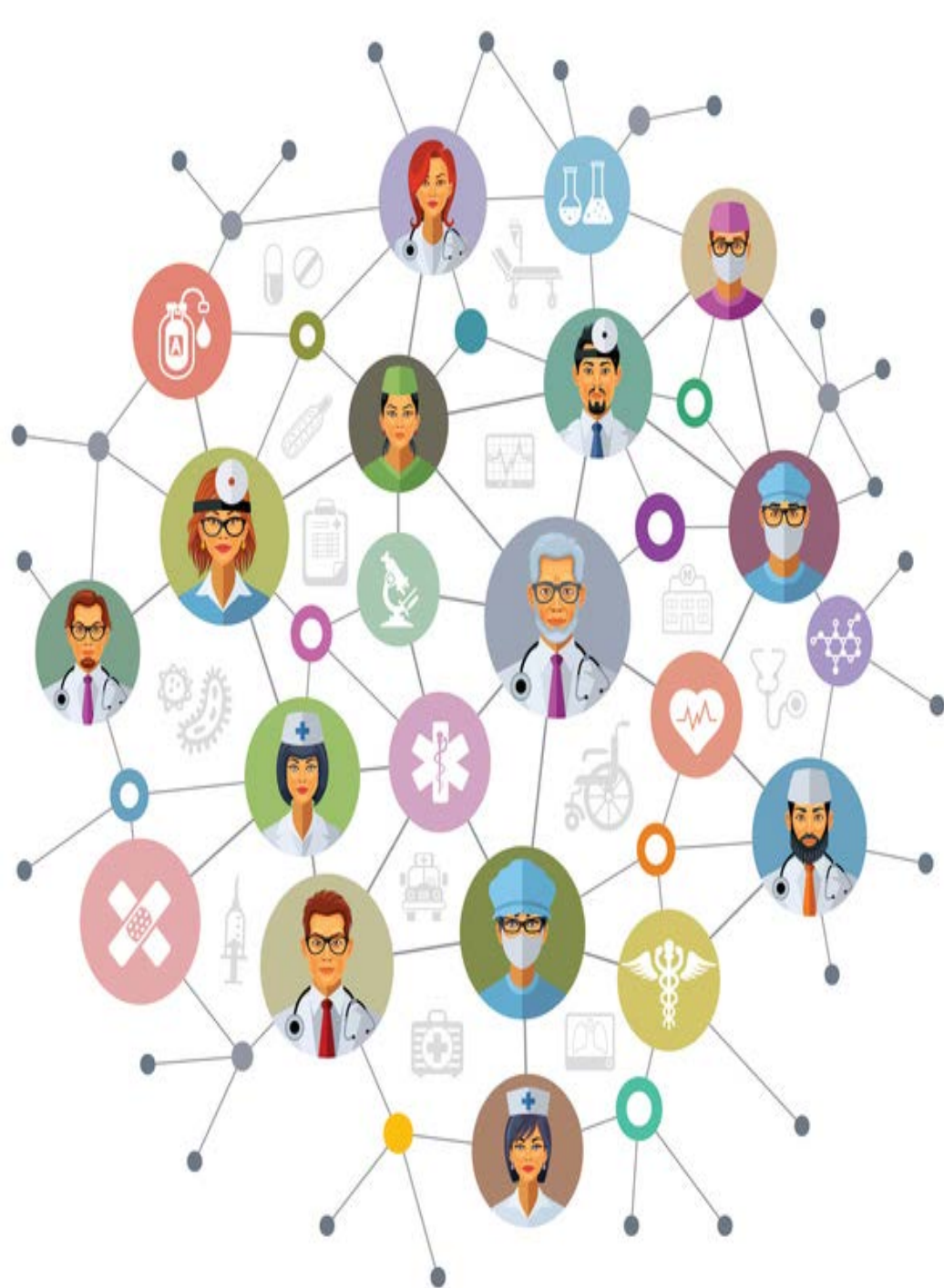
Cassie Song

Biomedical Research PhD Student

Joan C. Edwards School of Medicine

Marshall University

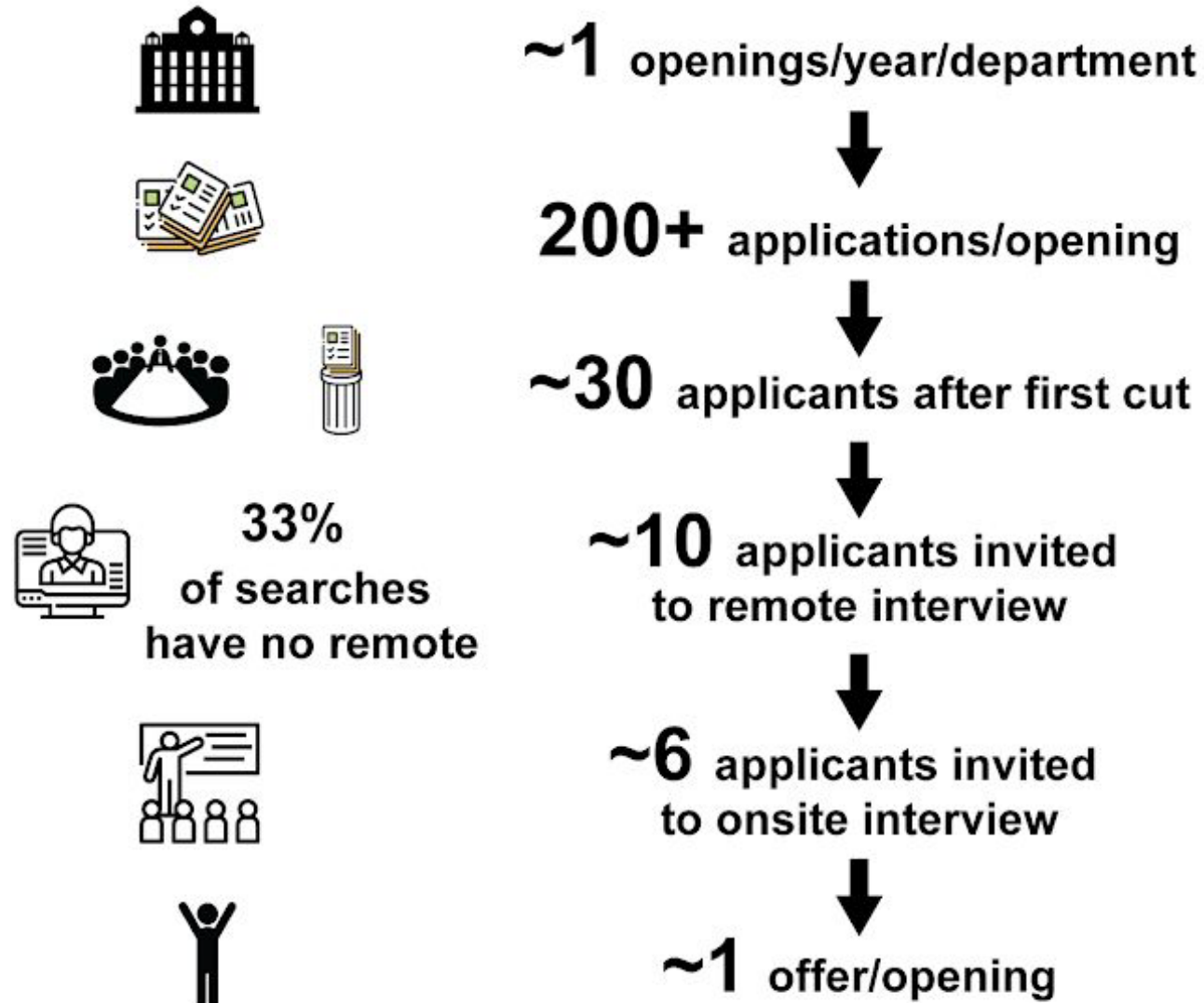




Objectives

- Importance of Networking
- Different types of Networking
- How to Network in Medicine and Science

Typical job search process



What was your perception of the entire application process?



What was helpful for your application?



**What information do you wish more candidates knew
when they submit their application?**

A word cloud where the words are of varying sizes and orientations, all in shades of brown. The word 'Research-Proposal' is the largest and most central. Other words include 'Collegiality' (underlined with a blue line), 'Research-Impact', 'Papers', 'Authenticity', 'Independence', 'Creativity', and 'Chalk-Talk'.

Collegiality
Research-Impact
Papers Authenticity
Research-Proposal
Independence Creativity
Chalk-Talk

Have you noticed any changes in the search process since the first search you were involved in?

Changed
Higher-credentials-required
Stronger-Candidates
Online-interviews
Negatively-portrayed
Recommendation-Letters
Chalk-Talks
Not-Changed

Resources used during first CT surgery job search



Networking

: the exchange of information or services among individuals, groups, or institutions

specifically : the cultivation of productive relationship for employment or business

Websites as a Networking Tool

Maria Serrat

**MARSHALL UNIVERSITY**
Joan C. Edwards School of Medicine

[Home](#) | [Research](#) | [Office of Research and Graduate Education](#) | [Research Faculty](#) | [Biomedical Sciences](#) | [Maria Serrat](#)

[Home](#)
[About Us](#)
[Graduate Education Programs](#)
[Departments](#)
[Centers](#)
[Core Facilities](#)
[Resources](#)
[Research Faculty](#)
[Research Opportunities](#)
[Funding Opportunities](#)
[Health Sciences Research Day](#)
[Marshall Clinical Research Center](#)



Maria A. Serrat, Ph.D.
Associate Professor
Department of Biomedical Sciences
Office: BBSC 241N, CEB 307
Laboratory: BBSC 213, CEB 307
serrat@marshall.edu
[Biosketch](#)
[Pubmed Publications](#)

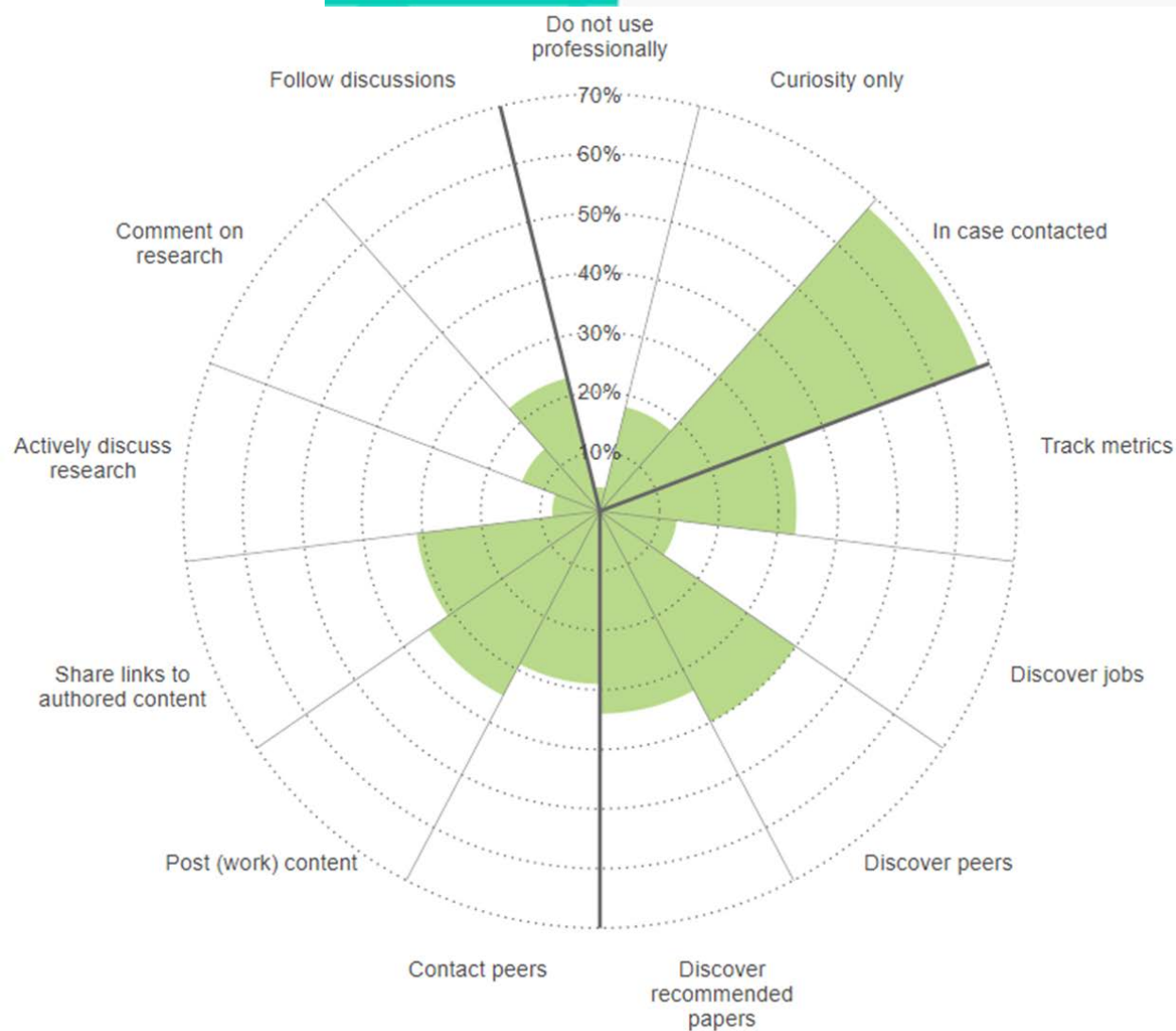
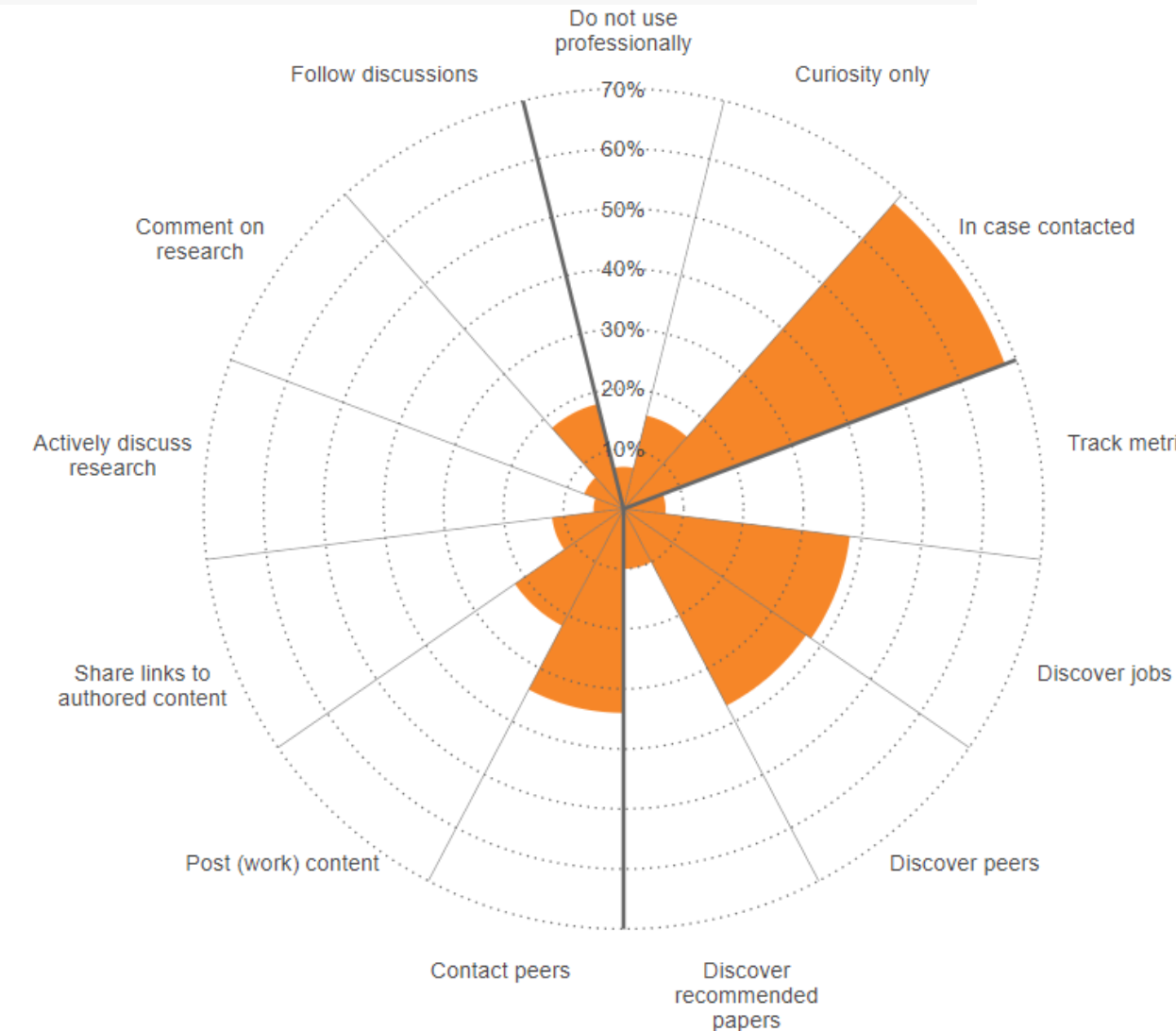
[Research Interest](#)

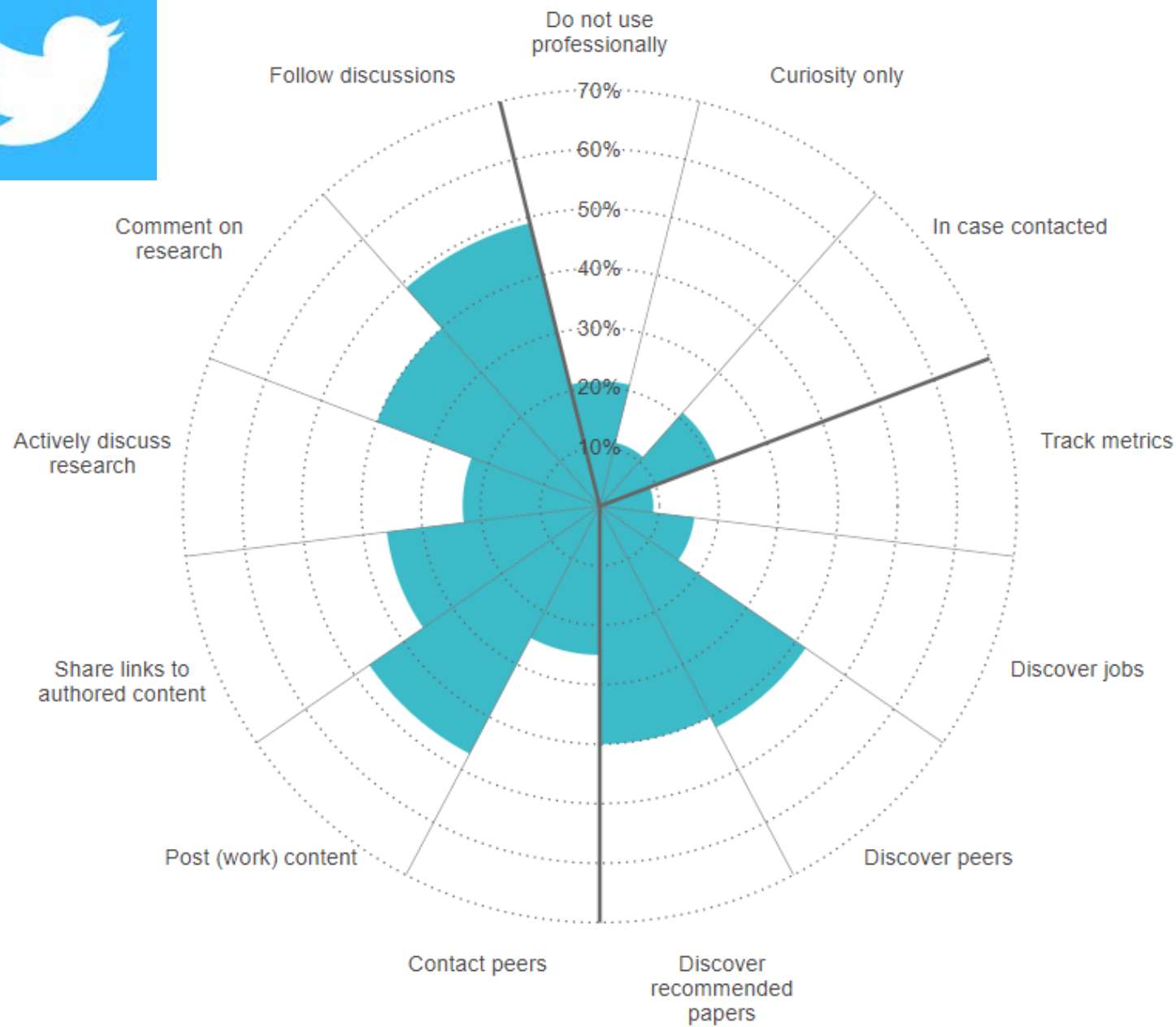
[Laboratory Projects](#)

[Laboratory Personnel](#)

Research Project

Childhood obesity can lead to chronic skeletal disability. In West Virginia, over one third of children are overweight or obese by age 10. Obese children have higher rates of linear growth, accelerated skeletal maturation, and diminished bone quality. These factors can lead to the development of painful conditions such as limb bowing, joint instability, fractures, and early onset osteoarthritis. The major treatment obstacle is lack of knowledge of the underlying cause of obesity-induced growth acceleration. Paradoxically, obese children have low to normal levels of growth hormone and IGF-I, the two major hormones that stimulate growth. Our research couples in vivo imaging with a mouse model of juvenile obesity to determine how obesity alters IGF-I transport to cartilage plates of the growing skeleton. We use in vivo models to investigate the physiological regulation of bone elongation and the impact of environmental influences such as diet and temperature on the bone lengthening process.





Conferences as a Networking Tool



al Meeting at Experiment
HE DATE!

21 | Virtual | Anatomy.org/EB2021

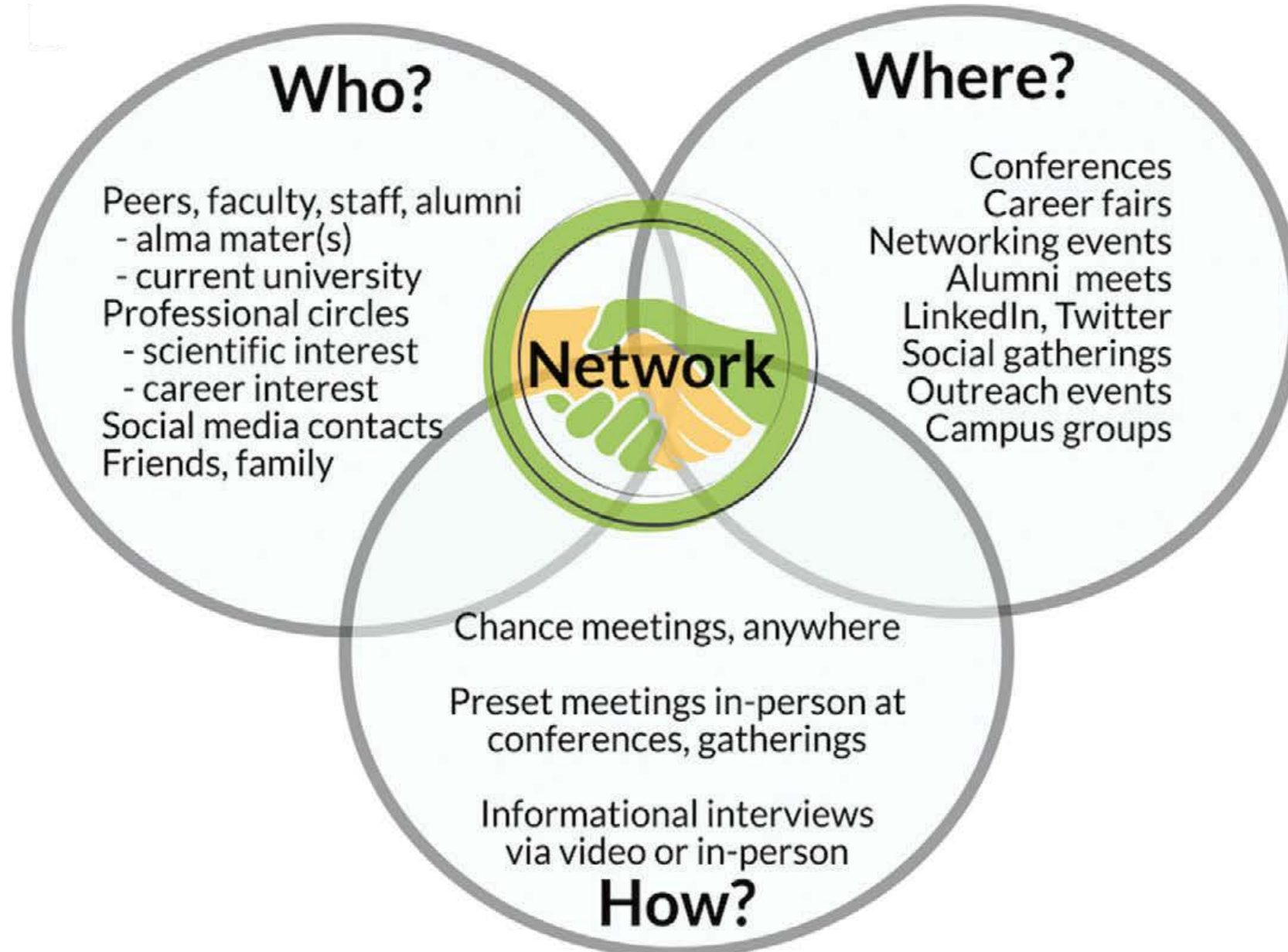
FOR
MY  **2021** APRIL
27-30



Conferences in the time of Corona

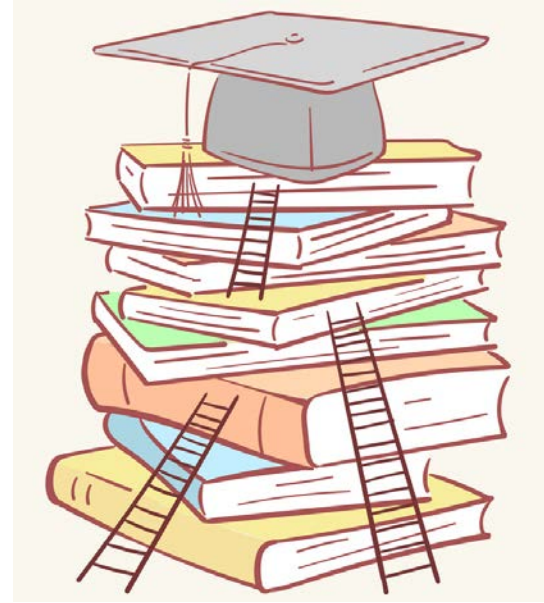


How to Network



Summary

- **Networking is Important**
- **Make time to create and maintain your network**
- **Utilize different types of networking tools**





Cassandra A. Song
song27@live.marshall.edu

Mentor: Maria Serrat, Ph.D.

Project: The role of the IGF-1 signaling axis in
obesity-induced linear growth acceleration

Undergraduate Institution: Chaminade
University of Honolulu