



Marshall University
 Joan C. Edwards School of Medicine
 Organizational Chart
 9/7/2016

**Dean
 School of Medicine**

**Department
 Chairs**

**Development &
 Alumni Affairs**

Diversity

**Public Affairs /
 Communications**

Education

Clinical Affairs

Research

Business Development

**Government Relations,
 Health Care Policy &
 External Affairs**

**Larry Dial, MD
 Vice Dean**

**Ali Oliashirazi, MD
 Vice Dean**

**James Becker, MD
 Vice Dean/Chief Safety Officer**

**Undergraduate
 Medical Education**

**Biomedical Sciences
 Education**

**Graduate Medical
 Education**

**Clinical & Translational
 Sciences**

Basic Sciences

**Bobby Miller, MD
 Vice Dean**

**Uma Sundaram, MD
 Vice Dean**

**Paulette Wehner, MD
 Vice Dean**

**Uma Sundaram, MD
 Vice Dean**

**Gary Rankin, PhD
 Vice Dean**

Academic Affairs
 Admissions
 Curriculum
 Student Affairs
 Wellness

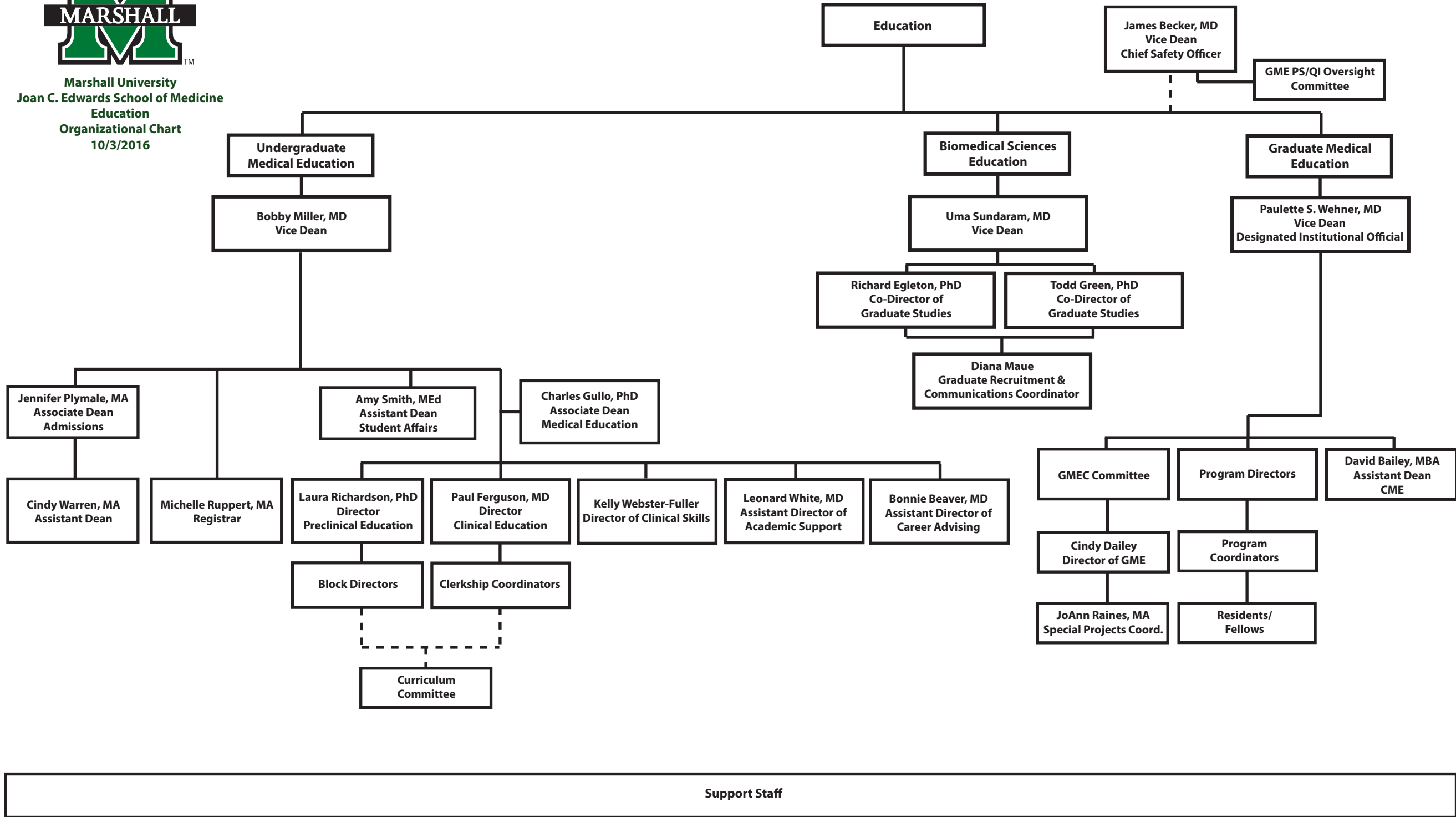
PhD
 MS-Research
 MS-Medical Sciences
 MD/PhD Program

GMEC
 Residencies
 Fellowships
 CME

Support Staff



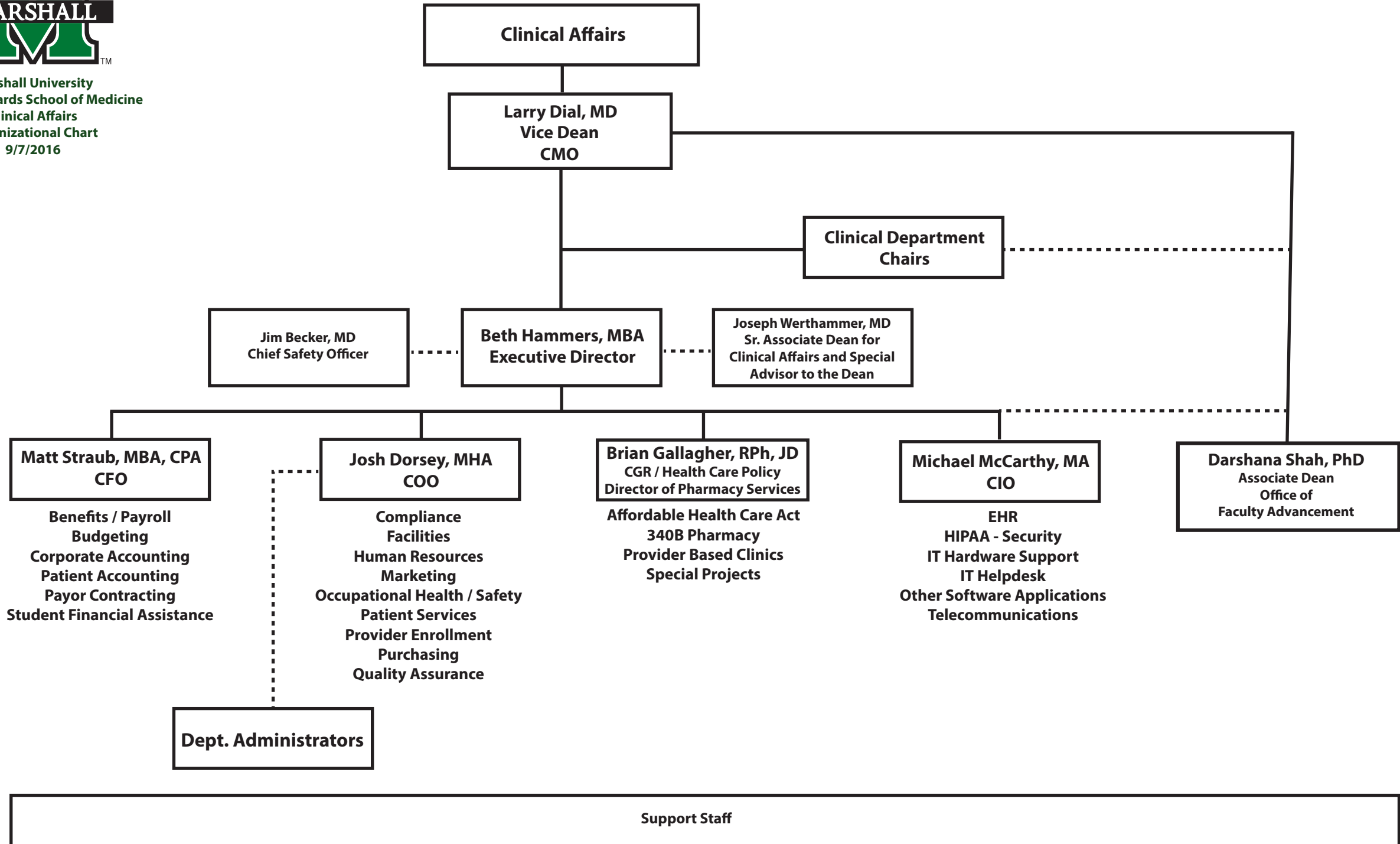
Marshall University
 Joan C. Edwards School of Medicine
 Education
 Organizational Chart
 10/3/2016



Support Staff



Marshall University
 Joan C. Edwards School of Medicine
 Clinical Affairs
 Organizational Chart
 9/7/2016



Clinical Affairs

Larry Dial, MD
 Vice Dean
 CMO

**Clinical Department
 Chairs**

Jim Becker, MD
 Chief Safety Officer

Beth Hammers, MBA
 Executive Director

Joseph Werthammer, MD
 Sr. Associate Dean for
 Clinical Affairs and Special
 Advisor to the Dean

Matt Straub, MBA, CPA
 CFO

Benefits / Payroll
 Budgeting
 Corporate Accounting
 Patient Accounting
 Payor Contracting
 Student Financial Assistance

Josh Dorsey, MHA
 COO

Compliance
 Facilities
 Human Resources
 Marketing
 Occupational Health / Safety
 Patient Services
 Provider Enrollment
 Purchasing
 Quality Assurance

Brian Gallagher, RPh, JD
 CGR / Health Care Policy
 Director of Pharmacy Services

Affordable Health Care Act
 340B Pharmacy
 Provider Based Clinics
 Special Projects

Michael McCarthy, MA
 CIO

EHR
 HIPAA - Security
 IT Hardware Support
 IT Helpdesk
 Other Software Applications
 Telecommunications

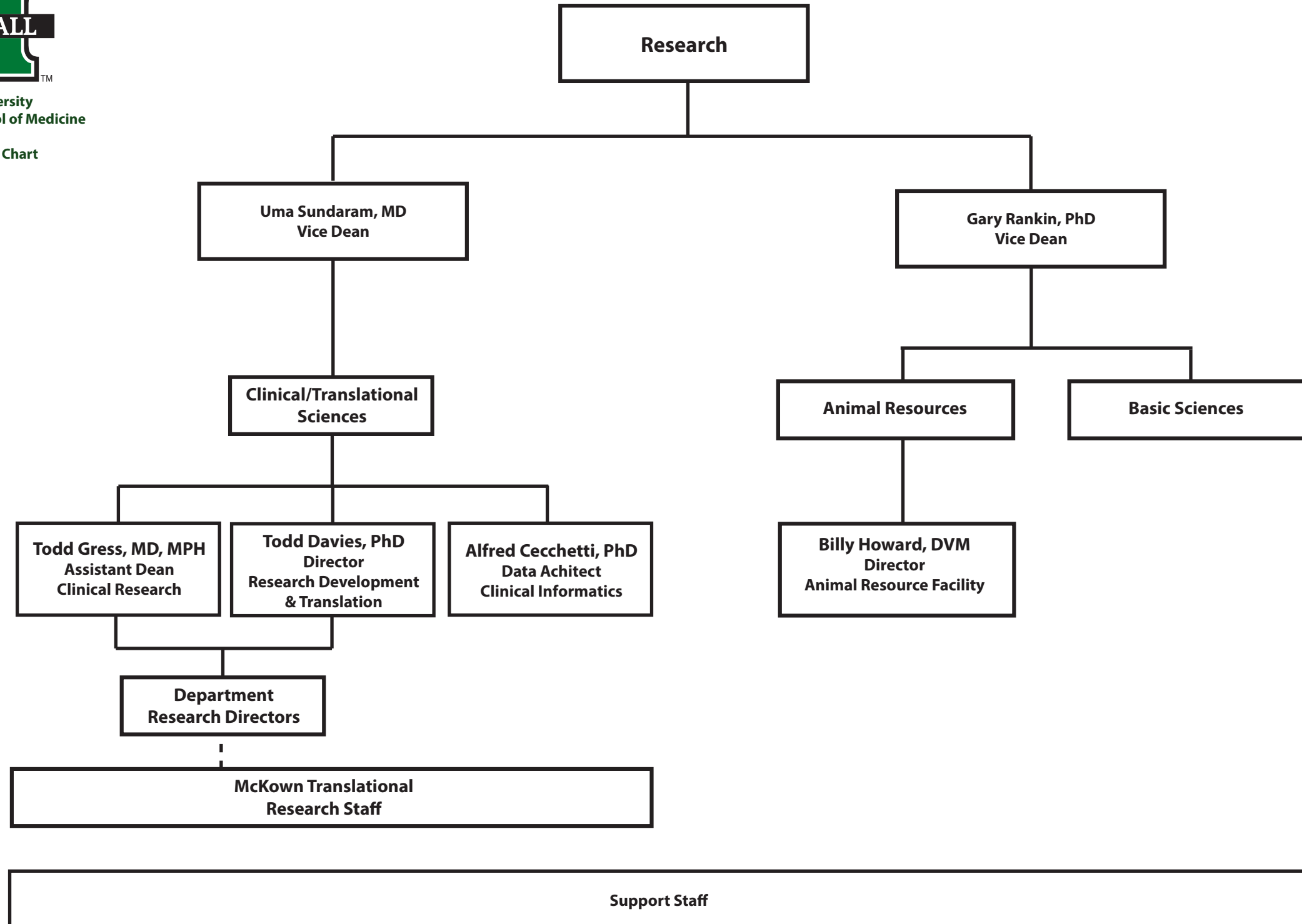
Darshana Shah, PhD
 Associate Dean
 Office of
 Faculty Advancement

Dept. Administrators

Support Staff



Marshall University
Joan C. Edwards School of Medicine
Research
Organizational Chart
9/7/2016





Marshall University
Joan C. Edwards School of Medicine
Government Relations,
Health Care Policy &
External Affairs
Organizational Chart
9/7/2016

